



PANTHERS ON THE PROWL LOOP

Starting and finishing in LaGrange, this ride features scenic backroads, old timber land, historic cities, lake crossings and more! Highlights include West Point Lake, the charming city of Hogansville and LaGrange College.

- ★ Start at the LaFayette Square
- 📍 70 mile loop
- 📏 4,000 ft. elevation change
- 🏁 Finish at the LaFayette Square

HOGANSVILLE

This small town has several shops and restaurants perfect for a pitstop. Depending on what time you start your ride, you may want to grab breakfast or lunch while passing through.

DINOSAUR BONES

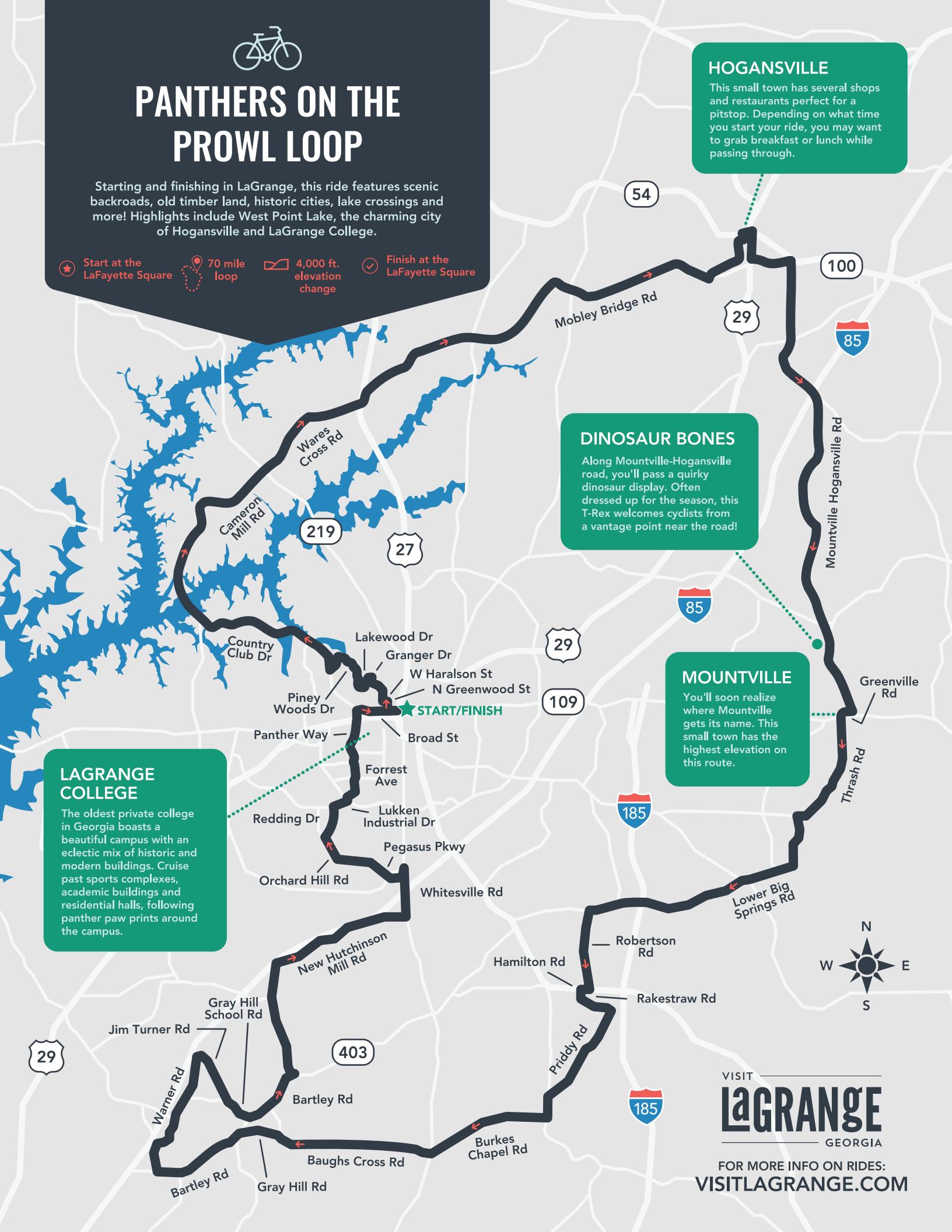
Along Mountville-Hogansville road, you'll pass a quirky dinosaur display. Often dressed up for the season, this T-Rex welcomes cyclists from a vantage point near the road!

MOUNTVILLE

You'll soon realize where Mountville gets its name. This small town has the highest elevation on this route.

LAGRANGE COLLEGE

The oldest private college in Georgia boasts a beautiful campus with an eclectic mix of historic and modern buildings. Cruise past sports complexes, academic buildings and residential halls, following panther paw prints around the campus.



VISIT **LaGRANGE** GEORGIA

FOR MORE INFO ON RIDES: VISITLAGRANGE.COM