



WINE & DINE-OSAUR LOOP

Along this route, you'll pass through two small cities, Hogansville and Mountville. In between these two destinations, keep your eyes peeled for a dinosaur display. Other highlights include Nutwood Winery, West Point Lake and scenic backroads.

- Start at the LaFayette Square
- 45 mile loop
- 3,200 ft. elevation change
- Finish at the LaFayette Square

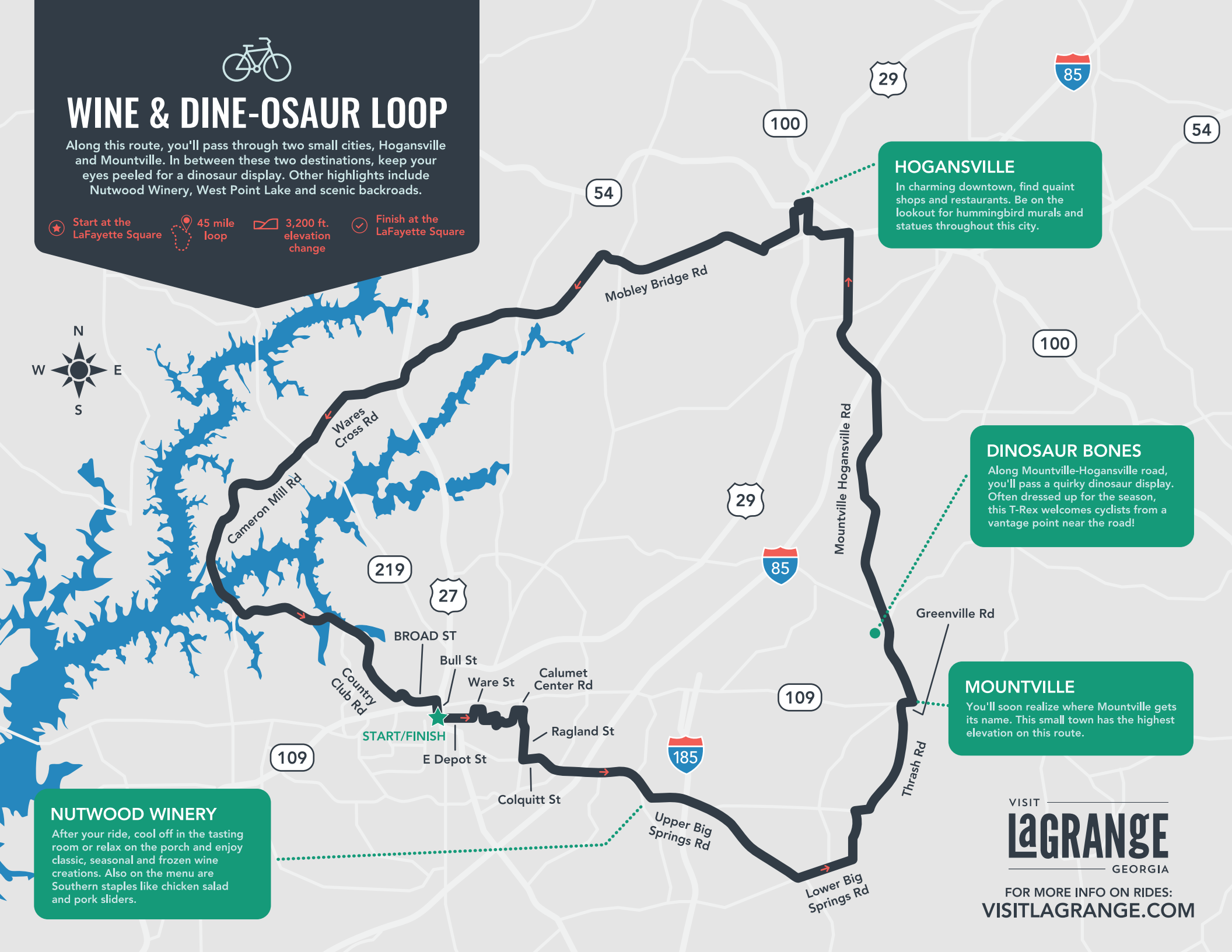


HOGANSVILLE
 In charming downtown, find quaint shops and restaurants. Be on the lookout for hummingbird murals and statues throughout this city.

DINOSAUR BONES
 Along Mountville-Hogansville road, you'll pass a quirky dinosaur display. Often dressed up for the season, this T-Rex welcomes cyclists from a vantage point near the road!

MOUNTVILLE
 You'll soon realize where Mountville gets its name. This small town has the highest elevation on this route.

NUTWOOD WINERY
 After your ride, cool off in the tasting room or relax on the porch and enjoy classic, seasonal and frozen wine creations. Also on the menu are Southern staples like chicken salad and pork sliders.



VISIT
LaGRANGE
 GEORGIA

FOR MORE INFO ON RIDES:
VISITLAGRANGE.COM