



Hills & Dales Farm 10 Mile Loop

Starting and ending in downtown LaGrange, this loop navigates through our charming city center, passing iconic landmarks along the way before heading through residential areas and old farm country.

- Start at Southbend Park
- 938 ft. elevation change
- Finish at Southbend Park

HILLS & DALES FARM ROAD

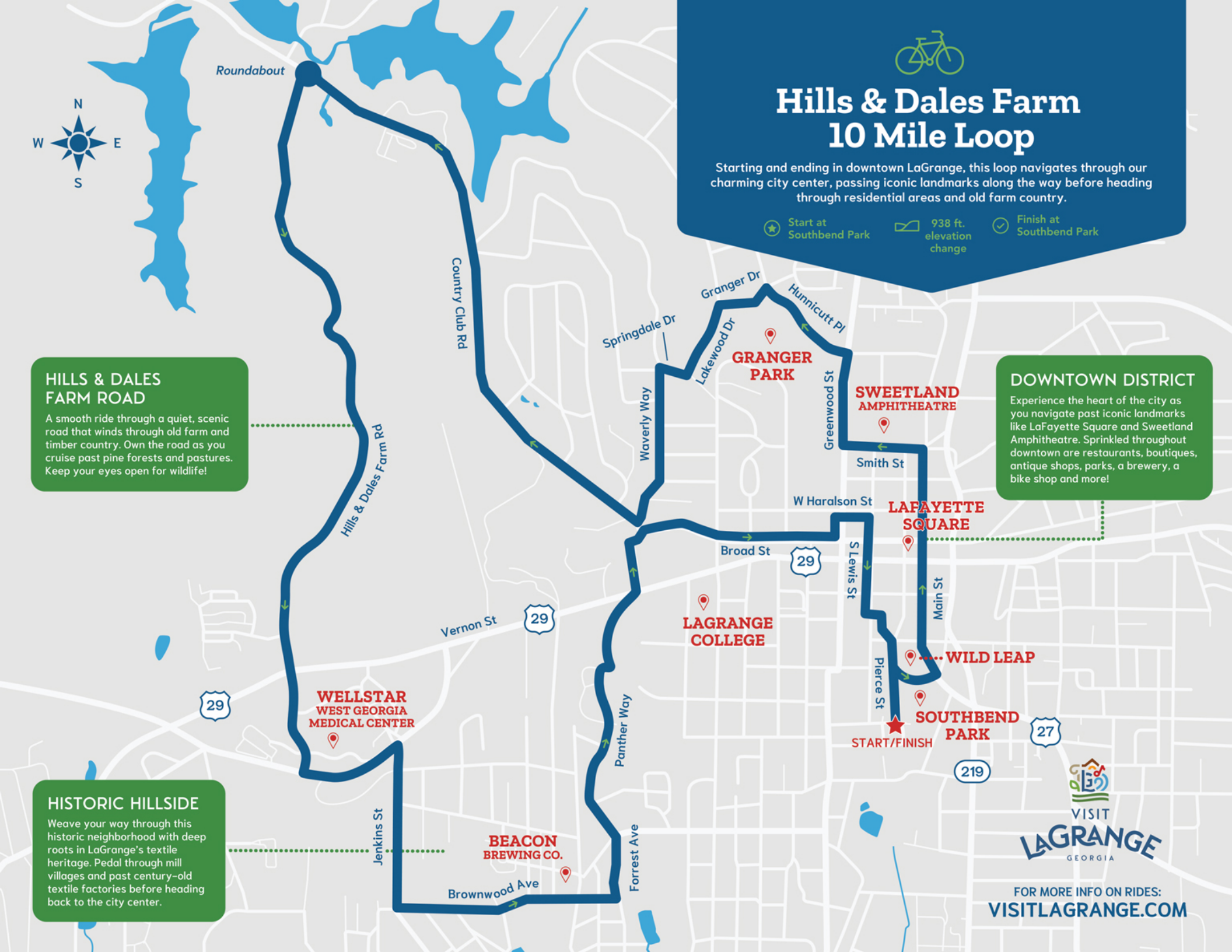
A smooth ride through a quiet, scenic road that winds through old farm and timber country. Own the road as you cruise past pine forests and pastures. Keep your eyes open for wildlife!

DOWNTOWN DISTRICT

Experience the heart of the city as you navigate past iconic landmarks like LaFayette Square and Sweetland Amphitheatre. Sprinkled throughout downtown are restaurants, boutiques, antique shops, parks, a brewery, a bike shop and more!

HISTORIC HILLSIDE

Weave your way through this historic neighborhood with deep roots in LaGrange's textile heritage. Pedal through mill villages and past century-old textile factories before heading back to the city center.



FOR MORE INFO ON RIDES:
VISITLAGRANGE.COM